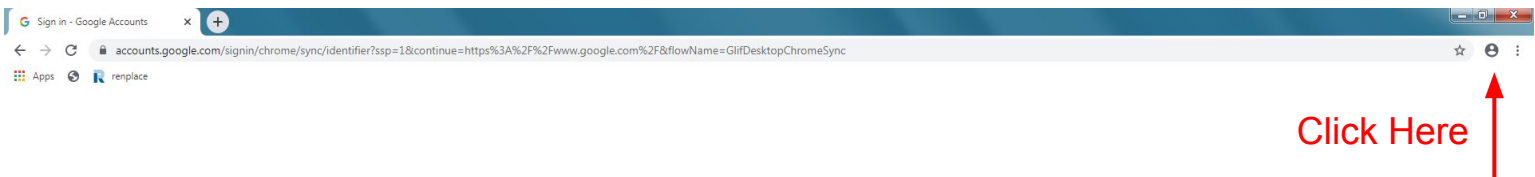


How to Log into Student Chrome Account

Step 1: Make sure you have the Google Chrome Browser open. You can download it at google.com. For tablets and phones visit your devices web store. The app is free.



Step 2: When you open the browser you should see something like this. You will need to click on the chrome user.



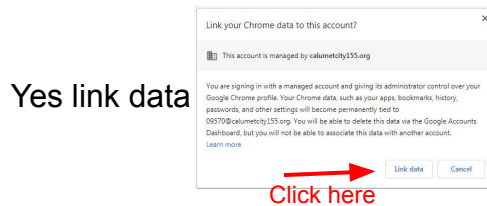
Step 3: If you are new to chrome skip this step.

If you already have a chrome account open you will need to add a user. Choose their icon and name the account.

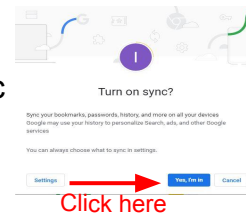
Step 4: Sign in. All of our students are already chrome users. Enter Students email and password.



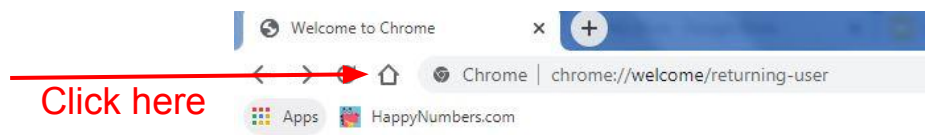
When prompted:



Then
Yes turn on sync



Step 5: Click on the home button



This should take you to the wilson school symbaloo page. Students know how to navigate this page. As long as they are under thier chrome log-in, all of their passwords and class information to use the activities should be saved.

The symbaloo web address is

<https://sites.google.com/calumetcity155.org/wilsonsymboloo/wilson-symboloo>